

Simplicity

- Uses similar connections as the LAN, keeping your network as productive as it is easy to use.
- Affordability of Ethernet makes implementation easy by keeping everything familiar.
- Native Ethernet connection end-to-end gives the same local feel regardless of how big your network is.
- Can lower cost of ownership since you don't have to adapt to a new technology.

Versatility

- Ethernet can work in your LAN, extend to the Metro and WAN, and reach your global locations.
- As your business applications require more bandwidth, Ethernet services can scale, usually without costly equipment upgrades, providing you with a high degree of bandwidth flexibility.
- You get an agile and cost effective solution for today and tomorrow.
- Supports a variety of configurations including point-to-point, point-to-multipoint or multipoint-to-multipoint.

Availability

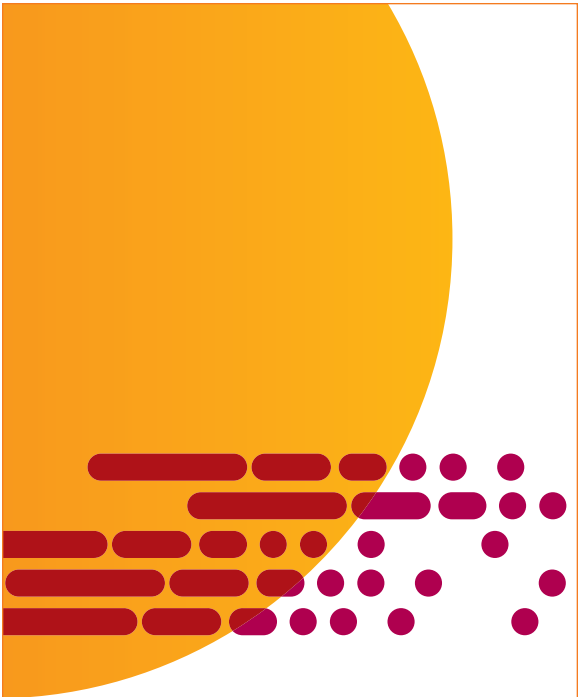
- AT&T has an extensive U.S. and global footprint so Ethernet is available almost anywhere you need it.

Security

- AT&T offers 24 hour a day, 7 days a week monitoring of your network to ensure maximum performance.
- AT&T's network has security built into every layer, with additional options for end-user application security as well as diversity and redundancy.

Connection Type	Service Type	AT&T Service Name
Ethernet Private Line	Metro PL	GigaMAN®
		DecaMAN®
		Wavelength Service Basic Arrangement - Intra-state
		Wavelength Channel Service
	WAN PL Metro SONET Ring	EPLS-WAN
		ACCU-Ring® Network Access Service
		Dedicated SONET Ring Service
		SMARTRing® Service
	Metro DWDM Ring	Ultravailable® Network Service
Wavelength Dedicated Ring Service		
Switched Ethernet	Metro E-LAN	Ethernet Switched Service-MAN
		OPT-E-MAN®
		Metro Ethernet Service
	WAN VPLS	OPT-E-WAN SM
	Global VPLS	OPT-E-WAN SM
Ethernet Access	Internet	Managed Internet Service
	VPN	AT&T VPN

For more information, please visit www.att.com/Ethernet or contact your AT&T sales representative.



AT&T Ethernet Services

Your Network Should
Fit Your Business Needs,
Not The Other Way Around



Your network has growing demands for new high speed data applications and service consolidation. Ethernet Services can help meet today's needs while preparing for tomorrow.

Designed for You

Choose Ethernet if your business is using IP based applications such as data, VoIP, and video transmission. You have the same type of flexibility and control you expect from your Local Area Network because this solution is designed for your business requirements, no matter how far your network reaches.

It doesn't matter if your business needs high speed access for small branch offices, high capacity to mission-critical data centers, or end-to-end connectivity from 2 Mbps to 10 Gbps, AT&T has the Ethernet solution that is right for you.

Relax

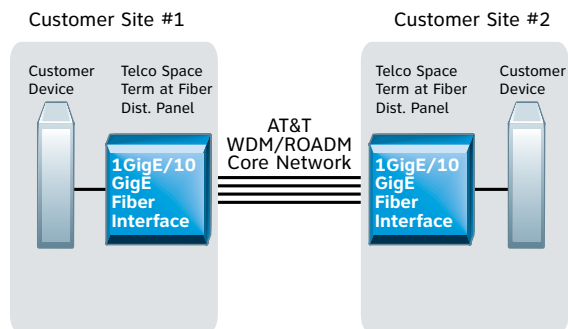
You can rest easy knowing that the service you get today can adapt to the requirements you may have tomorrow. Ethernet is versatile. To make it easier for you, you can choose from a variety of bandwidths and configurations that can be expanded and changed to keep up with your changing business needs.

Ethernet Private Line

Connect two locations with a familiar and proven technology. Ethernet Private Line delivers an end-to-end Ethernet experience in a dedicated private line connection.

You can choose additional options like redundancy and diversity to further protect your investment. You can use Ethernet Private Line as access to larger networks, the Internet, as back-up, or for load balancing your large network.

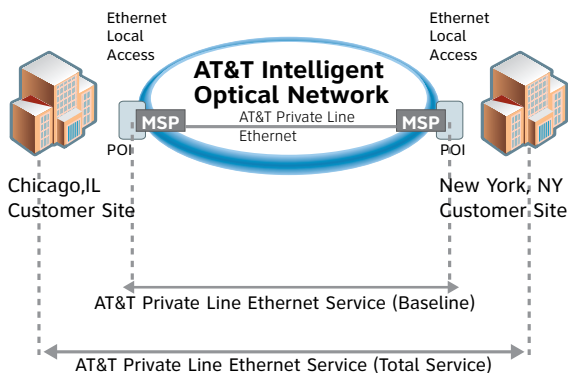
Ethernet Private Line - MAN



Connect locations within a metropolitan area in speeds from 50 Mbps to 10 Gbps.

With Ethernet Private Line you can take your dedicated connections to the next level. You can combine data from multiple applications into a single connection that is easier to manage and can support your growing bandwidth needs up to 10 Gbps on a single connection.

Ethernet Private Line - WAN



POI=AT&T Ethernet POP Point of Interface

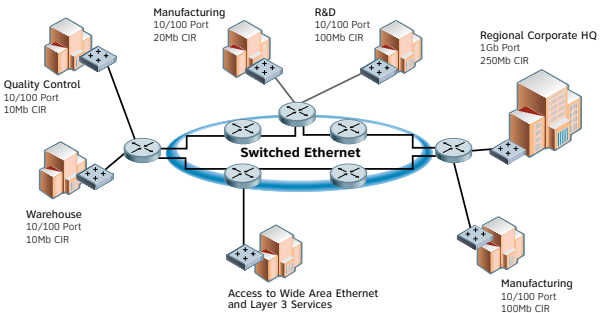
Connect metropolitan areas across a dedicated National Wide Area Ethernet connection in speeds from 50 Mbps to 10 Gbps and a variety of connection types.

Switched Ethernet & Virtual Private LAN Service (VPLS)

Switched Ethernet can extend your Local Area Network while connecting your remote locations across the metro or the wide area. You get Ethernet service with highly scalable speeds from 10 Mbps up to 1 Gbps. This service can be designed as point to point (virtual private line service or EVPL), point to multipoint (hub and spoke) and multi-point to multi-point (VPLS). You can also upgrade the interface on your premises-based Ethernet switches to "turn up the speed" of your bandwidth. Skilled resources for Ethernet local networks are widely available, so there is little or no training required for staff to apply those same skills to Ethernet in the metro or wide area.

Use Switched Ethernet to connect multiple locations. You can prioritize traffic using Virtual Local Area Networks (VLANs) and integrate Internet access with added security as well. Pricing for Switched Ethernet is generally not distance sensitive, so it can be an economical choice for global locations in a VPN or virtual private line configuration.

Switched Ethernet & Virtual Private LAN Service (VPLS) – Metro and Wide Area



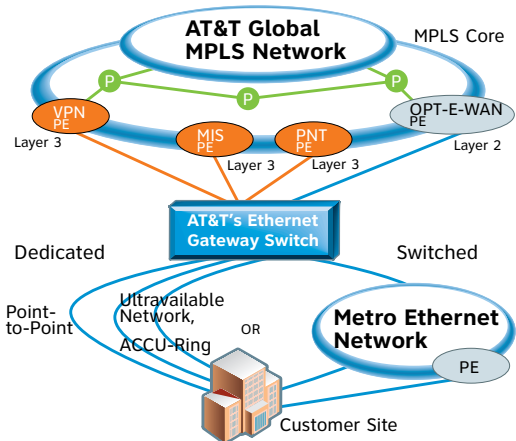
You can use Ethernet Virtual Private Line (EVPL) in your Metro or across a Wide Area Network, nationwide or globally and potentially save since unlike other private line services, you only pay based on the ports or connections to the network and not mileage.

Ethernet Access

You can use Ethernet as an access method to connect to the Internet and other services such as VPN. Adding Ethernet to your VPN means you can evolve the network you want without sacrificing the network you already have.

Use Ethernet access to connect your existing Ethernet equipment to the Internet, expand your existing network or merge your VPN network with Ethernet for a single network image with varying levels of control and security. The best part is you don't have to abandon one network for another, just use the best of both for the network designed to work for you.

Ethernet Access



PE=Physical Edge

Connecting a variety of services.